

Opening hours

Open Monday to Saturday (closed Sundays)

Summer hours *Easter Saturday to 30 September*
10.00am to 5.00pm (last admission 4.30pm)

Winter hours *1 October to Good Friday*

10.30am to 4.30pm (last admission 4.00pm)

Open Bank Holidays (closed 24–27 Dec 2012 and 1 Jan 2013)

PLEASE NOTE:

Due to exhibition re-hangs, we will be **closed** or have limited access from:
11 – 15 June; 10 – 14 September, and 26 – 30 November 2012,
and 14 – 18 January and 11 – 15 March 2013.

Please check that we are open during these periods.

The Orangery Café and the Shop remain open at all times.

Admission

£4.50 adults • £3.00 concessions, inc. over 60s

Children FREE • Saturdays FREE (*donations invited*)

7 Day 'Art Pass' including Penlee House, Tate St Ives, Barbara Hepworth Museum, Leach Pottery, Newlyn Art Gallery and The Exchange:

£14.50 adults, £8.50 concessions

Facilities

Licensed café overlooking attractive park

Gift/book shop

Ramped/lift access throughout

Adapted toilet & nappy changing facilities

Disabled badge parking (*N.B. three spaces only*)

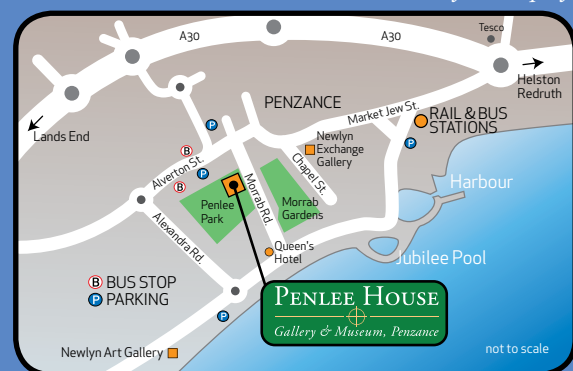
Children's play area in park

Directions by road

Follow brown signs from Tesco roundabout

Nearest parking

Penlee House Car Park, Alverton Street (*Pay & Display*)



Penlee House Gallery & Museum
Morrab Road, Penzance TR18 4HE

t: 01736 363625 e: info@penleehouse.org.uk

www.penleehouse.org.uk

*Penlee House is owned and operated by Penzance Town Council
with partial funding from Cornwall Council*

Design: Dave Myrnie www.myrnie.com

About Penlee House

Built in 1865 as a gracious Victorian home, Penlee House has been converted to create a first class gallery and museum set within an attractive park. It specialises in showing the area's unique, rich cultural heritage incorporating the historic collections of Penzance Town Council, Newlyn Art Gallery and the former Penwith District Council.

For more information and to search our collections, visit www.penleehouse.org.uk.



“Very much a people's gallery, probably because so many of the paintings are of the local landscape and feature real fishermen, wives and children who posed for the artists”

The Bath Chronicle

The Galleries

A programme of changing exhibitions celebrates the skill and craftsmanship of painting in West Cornwall in the late 19th and early 20th centuries, usually including the world famous 'Newlyn School' and Lamorna Group artists, such as Stanhope and Elizabeth Forbes, Walter Langley and Lamorna Birch.



Norman Garstin *The Rain it Raineth Every Day*

The Art Collection

Penlee House has a permanent collection of paintings which is actively being developed. Some of the best known works include *The Rain it Raineth Every Day* by Norman Garstin, *School is Out* by Elizabeth Forbes, *Among the Missing* by Walter Langley and *On Paul Hill* by Stanhope Forbes. Please note that although each exhibition includes selected works from our collection, **there is no permanent display** and key works are sometimes out on loan to other Galleries: please check what is on show before making a special journey.



Elizabeth Forbes *School is Out*

The Museum

Founded in 1839, the museum's collections cover 6000 years of history in West Cornwall, from Penwith's awe-inspiring archaeological sites to the area's more recent social history. Recently refurbished, the museum displays reflect the unique and fascinating history of the area, including key figures such as Humphry Davy and the local fishing, farming, mining and tourism industries.

The Orangery Café

Our delightful licensed café, with its sun-bathed terrace overlooking the park, offers a range of coffees, afternoon tea with home baked cakes and freshly prepared light lunches, using the best of local produce. For enquiries, please contact the café direct on 01736 361325.



Stanhope Forbes *Alley Slip*

“An inspiring gallery of surprises, in the right place”

visitor comment

The Shop

Our well-stocked shop offers a wide range of prints, books, gifts and souvenirs. A mail-order service is available.



Walter Langley *Departure of the Fleet for the North*

The Friends of Penlee House

The Friends, a registered charity, provide voluntary help in the Gallery and raise funds to support our work. Benefits include free admission, shop discount, invitations to previews and a winter lecture programme: please ask for a membership form.

Group Visits

Tours and group visits are warmly welcomed: a free introductory talk is provided on request and a full guided tour can usually be arranged for an additional charge, but prior booking is essential for all groups and the maximum group size is 25.

Holiday and Family Activities

We have a regular programme of children's holiday and half-term workshops, often based on our exhibitions and offering the chance to experience new ideas and to experiment with unfamiliar materials. For details, please visit our website or ask to be put on to our children's workshop mailing list.

School Visits

We have a variety of activities for schools, ranging from object-handling sessions to art and history workshops, plus teachers' packs providing ideas and information for use in the Gallery and classroom. **School visits are free**, but must be pre-booked, and teachers are asked to contact us in advance to discuss their requirements.

“The Gallery is an unmissable delight”

visitor comment

Research and Enquiries

If you would like further information about a specific object, artist or painting, or would like to see an item in our reserve collections, please contact us.



For full details, please visit our website

www.penleehouse.org.uk

phone us on 01736 363625

email us info@penleehouse.org.uk



Penlee House Gallery & Museum



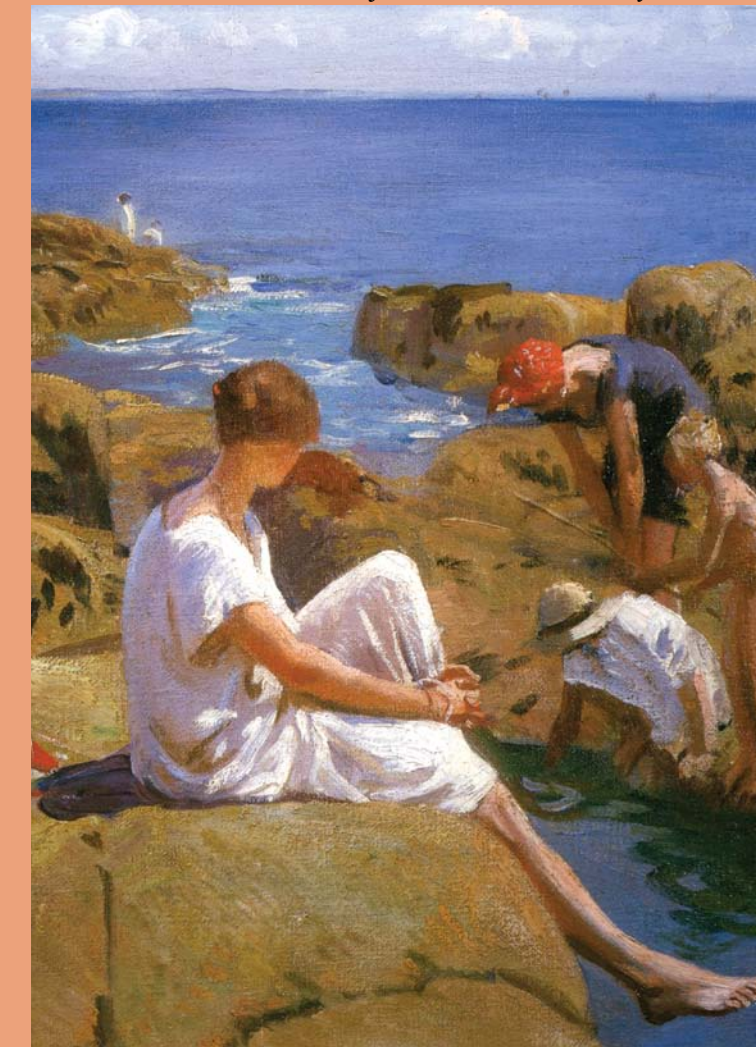
@PenleeHouse

PENLEE HOUSE

Gallery & Museum, Penzance

2012-13

The artistic heart of West Cornwall's history



Detail: The Rock Pool Laura Knight. Private Collection © The Estate of Dame Laura Knight



SMALL VISITOR ATTRACTION
OF THE YEAR 2011-12

South West Tourism Excellence Awards

01736 363625 www.penleehouse.org.uk



EXHIBITIONS 2012 – 2013

• Please note that it is necessary to close the galleries before and after exhibitions to change the displays. Please check that we are open during these periods. The Orangery Café and the Shop remain open at all times.



Waiting for the Boats, 1894 Albert Chevallier Taylor
Private Collection

24 March – 9 June 2012

Another Cornwall / Gens de Cornouaille(s)

Both geographically and in spirit, the far west of Cornwall is closer to Brittany than to London, and trading links between the two places stretch back many centuries. Arriving in 1884, Stanhope Forbes famously described Newlyn as 'a sort of English Concarneau', as he and many of the other artists settling here at that time had first spent time in Brittany. This exhibition looks at the strong links between Cornouaille, in the Finistère district of Brittany, and West Cornwall, including paintings by much-loved 'local' figures such as Stanhope and Elizabeth Forbes, Walter Langley and Frank Heath, together with artefacts and photographs. Curated in conjunction with Le Musée Départemental Breton, Quimper, and sponsored by Brittany Ferries.

Ground floor galleries: a selection of Newlyn School paintings on view upstairs in Gallery 5

16 June – 8 Sept 2012

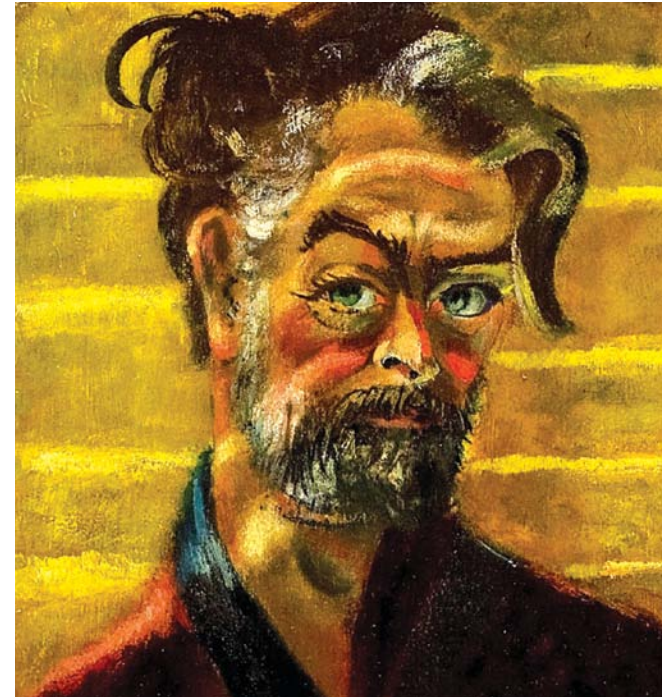
Laura Knight: *In the Open Air*

Dame Laura Knight (1877 – 1970) was a great celebrity in her time and her work is loved as much today as it was at the height of her fame. From her earliest days she wanted to paint in the open air, and this work began at Staithes, on the Yorkshire coast, and developed at Laren in Holland. It came to the fore when she arrived in Cornwall with her husband, Harold, and embraced the county's wonderful light, its seas and rocky coast. This exhibition includes outdoor paintings executed throughout her long and distinguished career, including depictions of Romany life, the spectacular panoramas below the Malvern Hills and the devastated townscape that forms the backdrop of her famous depiction of the Nuremberg war trials. Sponsored by Messum's and curated for Penlee House by Elizabeth Knowles, with assistance from the artist's great nephew John Croft, the show will tour to the Djanogly Art Gallery, Nottingham, and Worcester City Art Gallery and is accompanied by a new book, published by Sansom & Company.

Ground floor galleries: a selection of Newlyn School paintings on view upstairs in Gallery 5



A Dark Pool c.1916-19 Laura Knight
Laing Art Gallery (Tyne and Wear Archives and Museums) © The Estate of Dame Laura Knight



Detail: Self Portrait in a shadow, 1955 Sven Berlin
Private Collection © The Artist's Estate

15 Sept – 24 Nov 2012

Sven Berlin: *Out of the Shadows*

Cornwall played a pivotal role in the life of the legendary artist Sven Berlin (1911 – 1999), but little is known of his extraordinary work before he joined the St Ives art colony, or after he left it. In a wide-ranging show, Penlee House is delighted to reveal many more aspects of this multi-talented and charismatic figure. Best known as a sculptor and a painter, Berlin was also an adagio dancer, a soldier, a writer and poet. A self-confessed romantic, he held fast to his principles of personal truth throughout his life, even though it left him in the shadows of the art world. This exhibition traces his development as an artist and as a man, through oil paintings, watercolours, pen and inks, sculpture and intriguing ephemera.

Ground floor galleries: selection of Newlyn School paintings on view upstairs in Gallery 5

FREE ADMISSION

1 December 2012 – 12 January 2013

Penlee Inspired

Following the success of our first Penlee Inspired show in 2009, we are pleased to offer another chance for local schools, children and adults to exhibit work they have produced in response to the collections and exhibitions at Penlee House. Works in a wide range of media – from painting to video – will be shown alongside some of the Newlyn School paintings that inspired them. If you'd like your work to be considered for inclusion, please ask for further information: the closing date for entries is 13 October, and all are welcome to submit work for consideration. N.B. Entry to the Gallery & Museum is FREE throughout this exhibition.

Galleries 2, 3, 4 and 5 – including selected Newlyn School paintings throughout



Untitled: Inspired by the Different Ways of Seeing exhibition Jon Green
© Jon Green, John Daniel Centre

FREE ADMISSION

1 December 2012 – 12 January 2013

Crafts for Christmas

Penlee House's annual selling exhibition of work by Cornwall Crafts offers the chance to find a special gift for a loved-one or a unique acquisition for yourself, with a wealth of items by some of Britain's leading craftspeople, all of which are available for immediate purchase (cash, cheque or credit cards only).

Gallery 1



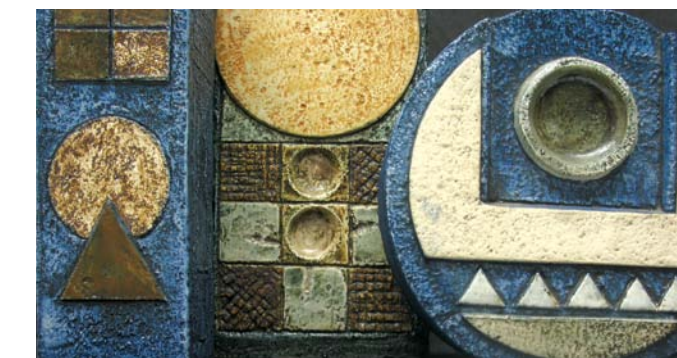
Selection of Troika Pottery
Image courtesy Market House Gallery, Marazion, © Joe Blewett

19 January – 9 March 2013

Troika Pottery: 1963 – 1983

Penlee House is pleased to present a celebration of the 50th anniversary of the founding of Troika by Leslie Illsley and Benny Sirota in St Ives in 1963. Although it was popular with visiting tourists, Troika was largely aimed at markets outside Cornwall: Heals of London was one of its earliest outlets and became their largest buyer. Public demand led to concentration on the rough-textured, matt pieces for which Troika is now famous. Although these were slip-cast, no two are identical, as the decorators took pains to vary their colour washes. The exhibition looks at the whole 20 year history of this important Cornish business and includes a wide range of pieces, from standardware to rare one-off items. A new book on Troika by Lawrence Illsley will be available for purchase.

Gallery 1: selection of Newlyn School and Lamorna group paintings on view in all other galleries



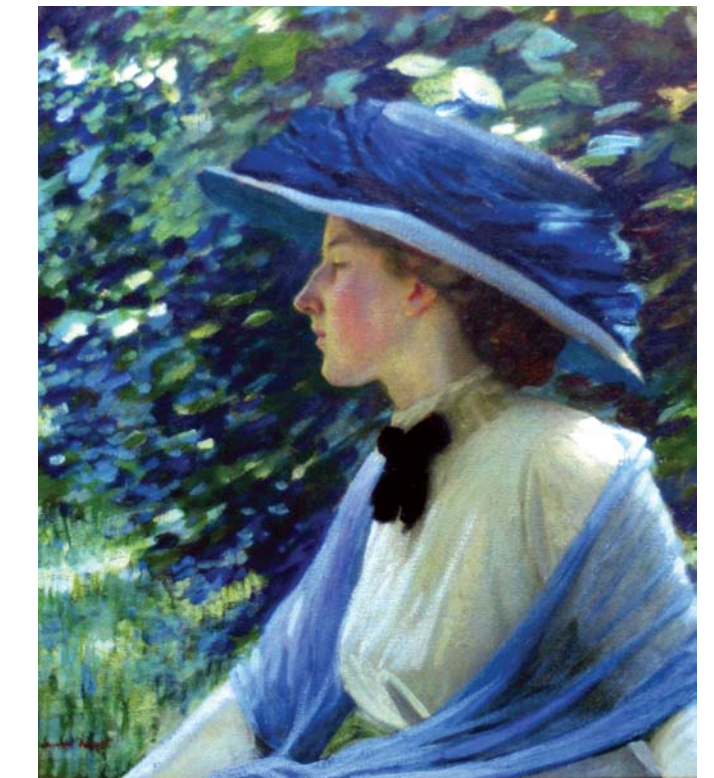
Detail: Troika Pottery
Penlee House Gallery & Museum

16 March – 8 June 2013

Summer in February

The moving story of Florence Munnings, first brought to the public's attention by novelist Jonathan Smith, has now been made into a major new feature film. A student at the Forbes School of Painting, Florence met the charismatic Alfred Munnings in Newlyn and they married in 1912, but their disastrous marriage ended in 1914 with her suicide. This exhibition brings together work by the story's main protagonists (the artists working around the Lamorna Valley at that time) and poignant memorabilia and photographs. The show includes paintings of beautiful Florence, who modelled for Laura and Harold Knight as well as Munnings, alongside paintings by artist friends and fellow Forbes School students, such as Frank Gascoigne Heath, Jill and Geoffrey Garnier and Ella and Charles Naper.

Ground floor galleries: a selection of Newlyn School paintings on view upstairs in Gallery 5



Florence Carter Wood, c.1910-11 Harold Knight
Private Collection, © The Estate of Harold Knight